

Qualitop master

High-performance attractive-looking coloured wearing course for industrial floors.

Product description

Qualitop master is a coloured hardener to be applied only in slurry form. It comprises mineral and hard synthetic aggregates selected additives and workability aids.

Colours

Available in 14 colours.
See colour chart for more details.

Properties

- Excellent resistance to abrasion
- Excellent resistance to traffic
- Attractive appearance - light reflective
- Static disseminating.

Uses

- Workshops - superflat floors
- Exhibition halls
- Multipurpose halls
- Individual dwellings
- General industrial use
- High-rise storage

Technical specifications

Qualitop master meets the requirements of the regulations in force (EN 13813, screed materials).

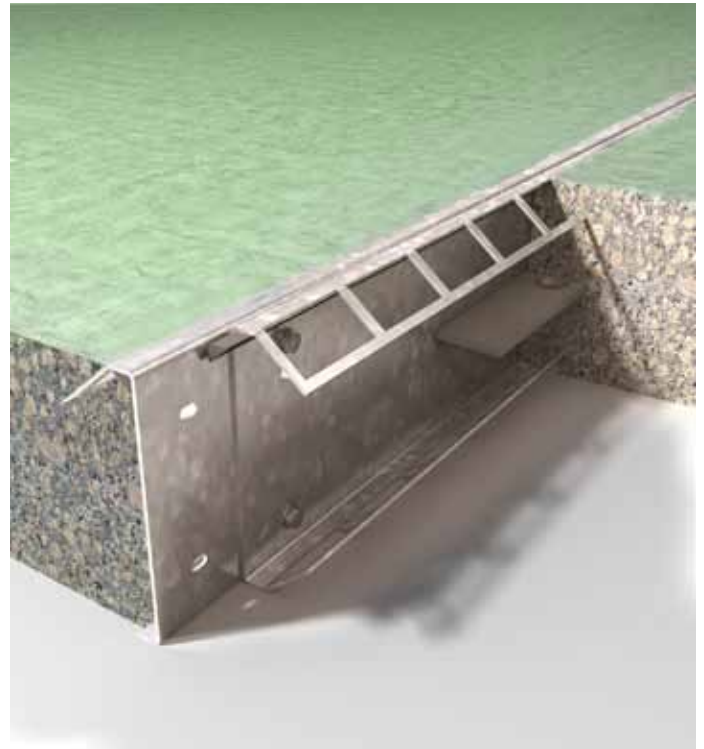
Compressive strength: $\geq 70 \text{ N/mm}^2$
EN 13892-2

Flexural strength: $\geq 7 \text{ N/mm}^2$
EN 13892-2

Abrasion resistance: $\leq 5 \text{ cm}^3 / 50 \text{ cm}^2$
EN 13892-3

Abrasion resistance: conforms to BS 8204 'AR0,5' class
EN 13892-4

Abrasion Taber resistance : 1,50 gr
(H-22 / 1000 cycles / 1000 gr ASTM C-501)



■ *Qualitop master*

■ Support

Qualitop master

Qualitop master is a ready-to-use surface hardener. It is used solely as a fresh-on-fresh topping.

Directions for use

Preparation of the concrete base

The wearing course is laid on a slab or area of pavement whose thickness is determined by the nature of the ground and the loadings to be applied to it.

Plasticisers may be added to improve the workability of the concrete. Concrete air entrained must be lower than 3%. The slurry is applied as soon as the concrete starts to set, after smoothing or sweeping the surface so that the hardener is perfectly integrated with the supporting layer.

Required preparation

Small and medium areas should be levelled with smoothing planks. For large areas we recommend the use of a Laser Screed.

Application of the Qualitop master wearing course

• Preparation of the fresh-on-fresh topping

- Mix 3 to 3.5 litres water with one 25 kg bag of **Qualitop master** in a vertical mixer (concrete mixer) until a homogeneous paste with good plasticity (slurry) is obtained.

NB: High quality in the final result can be obtained only as follows. Mechanical spraying is not permitted.

- Spread the slurry by squeegee or smoothing plank within formwork of the desired thickness, using at least 12 kg/m².
- When the coating begins to set, edges and corners should be smoothed by hand and the main surface by power trowel.
- Polishing should be done with power finishing trowels. Use Teflon® trowels when finishing surfaces with the lightest colours (ivory, salmon, white) to avoid burning the surface.

Curing compound

- **Roc Cure** or **ECOCURE 17** must be sprayed immediately after finishing work is complete over the entire surface area.
- The concrete must be fully set before the floor can be used. It is essential that the following time limits are observed:

pedestrian traffic	7 days
light traffic	14 days
full use (fork lifts etc)	28 days

Consumption

Qualitop master must be applied at a rate of at least 12 kg/m² per fresh-on-fresh topping.

Roc Cure or **ECOCURE 17** must be sprayed at a rate of at least 100 g/m². Refer to **Roc Cure** and **ECOCURE 17** data sheet.

Packaging

Qualitop master is supplied in 25 kg bags.

FIBC bulk packaging is possible on request for projects using mobile mixers. The contents of the "big bag" can be matched to the capacity of the mixer (maximum 1,000 kg). If kept in the original packing, protected from damp and bad weather, in a dry place, their storage life is the same as for cement (6 months). Use the products immediately once opened.

Health and safety

As **Qualitop master** is a powdered product, we recommend the wearing of a safety mask when it is being used.

(Safety data sheet available on request).

Recommendations

Be careful with the protection and repair of joints. Clean and look after the wearing course regularly (see guide on floor maintenance).

Note :

The screed properties under site conditions cannot always be directly comparable with the screed material properties obtained under laboratory conditions, due for instance to variations of mixing, compaction or curing.

Version 06/2013

www.rocland.eu
contact@rocland.eu

Z.A. Les Monts du Matin
Rue des Lauriers
F-26730 La Baume d'Hostun
France
Tel : + 33 (0)4 75 48 37 50
Fax : + 33 (0)4 75 48 30 03

